

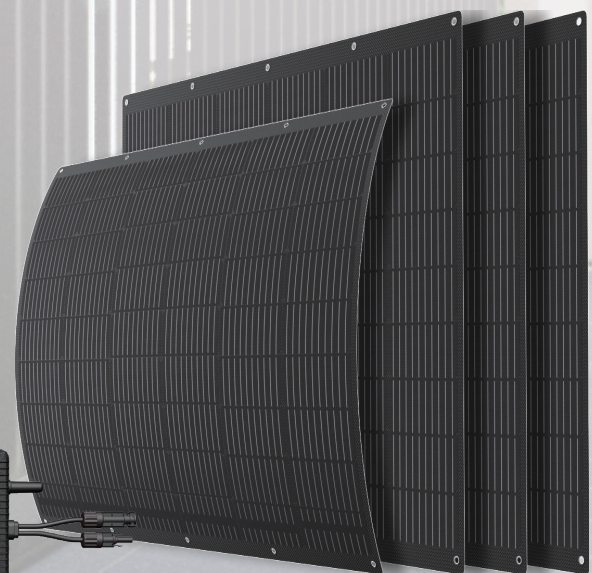
Solar Kits VFSK

VaySunic Flexible Solar Kits



VaySunic launched VFSK (VaySunic Flexible Solar Kits) series Solar On-Grid Kits for residential PV systems. It is a “Plug-and-play design” composed of flexible solar panel + microinverter, which can be installed by yourself.

VFSK is even smaller in size and you can put it in the car for easier transportation.



Power Cord
Plug and play cable

PV Connect Cable
MC4 Extension Cable

Accessories
Tie



Residential On-Grid PV Kits VFSK SERIES



SYSTEM SIZE		
PRODUCT MODEL	VFSK-800W	
PV System Size Nominal (Wp)	800W	
PV MODULE SPECIFICATION		
Panel Model	VF200W(BK)	
Power (W)	200	
Vmp (V)	15.42	
Voc (V)	18.71	
Isc (A)	13.45	
Imp (A)	13.01	
Dimensions (L x W x H) (mm)	1140 × 915 × 3	
PV module weight (kg)	3.4	
Output cables	4mm ² -50cm cables + mc4	
Operating Temperature (°C)	-40 to +85	
MICROINVERTER SPECIFICATIONS		
Inverter Size (w)	800	
Max DC Power (W)	870	
Max DC Voltage (V)	63	
MPPT Voltage range (V)	14-63	
No.of MPPT'S	2	
Max AC Power (VA)	800	1000
Max Output Current (A)	3.48	4.50
AC Nom.Voltage/Voltage Range (V)	230/180 ~ 275	
AC Grid Frequency range (Hz)	50/45 - 55	
Number of phases	1	
Dimensions (W x H x D) (mm)	274 × 222 × 36.5	
Inverter weight (kg)	3.22	
Compliance	IEC/EN 62109-1, IEC/EN 62109-2, IEC/EN 61000-6-1/-2/-3/-4, EN50549-1: 2019, VDE-AR-N 4105: 2018, CEI0-21	
* 12/240VUL inverters also available upon request		
SYSTEM LAYOUT		
# of Modules	4	
# of inverters	1	
# of inputs	2	
PV Layout options	Landscape or Portrait	
PV Array Surface Area (m ²)	4.17	
PV Array Weight (kg)	13.6	
PRODUCTION ESTIMATES (KWh)		
*Projected yearly output at 1100GHI/year	748	935
*Projected yearly output at 1460GHI/year	993	1241
*Projected yearly output at 1825GHI/year	1241	1551
*Based on 85% system derating(formula=DC Power x peak sunshine hour/year x derate factor)(GHI=Global horizontal irradiance)		
SYSTEM OPTIONS		
Communication	WIFI	
Battery Bank	Optional	
Packing Configuration		
Weight (kg)	23.5	
Dimensions (L x W x H) (mm)	1180 × 950 × 100	
Container	20'GP	40'HQ
Pieces/Pallet	1190 * 1120 * 120 + 1190 * 910 * 120	1190 * 1120 * 120
Pallets per Container	16 + 2	40
Pieces per Container	194	500